



GREAT SOUTHERN
KILLARNEY

Children's Menu

As we hope you have noticed, at the Great Southern Killarney we love children and we know delicious, healthy children's food makes for happy children and happy families! Our Executive Head Chef and his team have created this healthy children's menu especially for you using their expert knowledge and based on their own children's favourites. We hope you enjoy your meal and do let us know your particular favourite and, you never know, it might be on our Children's Menu next time you and your family come to stay with us. Bon Appétit!

Starter

Chilled Seasonal Melon
with Berries & Fruit Coulis
Contains: No Allergens

Toasted Ciabatta Bread with Garlic Butter
Contains: Gluten (Wheat), Milk, Soy

Caesar Salad with Chicken & Parmesan
Contains: Milk, Egg, Fish, Mustard

Soup of the Day
Contains: Milk, Celery

All our meals are prepared to order, please allow adequate time for preparation.

Main Course

Pasta served with Bolognese or Tomato Sauce
Contains: Gluten (Wheat), Milk, Celery

Grilled Chicken Strips
with Vegetables, Potato & Gravy
Contains: Milk, Celery, Sulphites

Pan Fried Fish Fillet
with Vegetables and Potato or Fries
Contains: Milk, Fish, Sulphites

4oz Striploin of Irish Hereford Beef,
Vegetables, Potato & Gravy
Contains: Milk, Celery, Sulphites

Dessert

Fruit Jelly & Ice Cream
Contains: Milk, Egg

Chocolate Cake
with Ice Cream & Toffee Sauce
Contains: Gluten (Wheat), Milk, Nuts, Soy, Egg

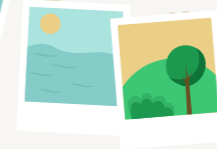
Please advise your waiter if you have any dietary requirements.

*Wishing you a
very tasty time!*

Can you name these international landmarks?
Can you spot the Irish landmark?
Hint: May the force be with you!



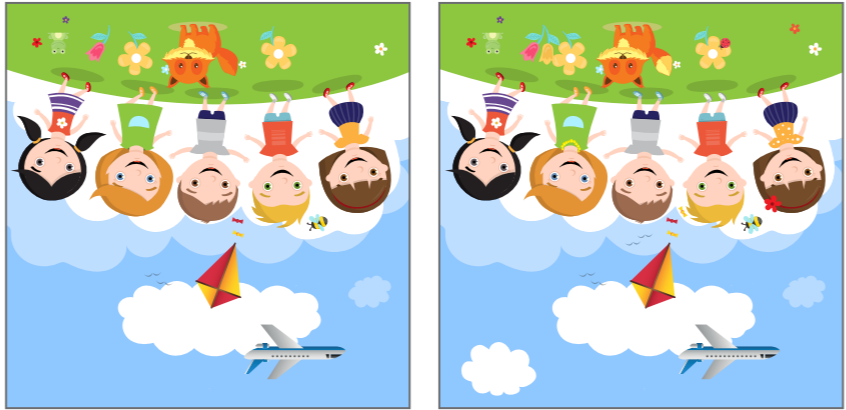
TRAVEL
AROUND
THE WORLD



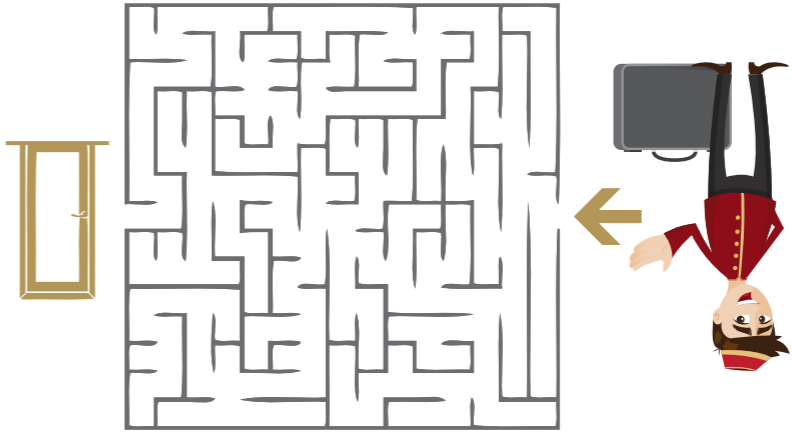
Word Search

G A R D E N R O O M L S T
 Z R P L A Y G R O U N D O
 M R E C E P T I O N D M I
 C L N A P T A U M X S A N
 H I S O T V M S R P L C N
 A B B N A S I N E A D R I
 R R S E B R O W N E S E S
 L A M I D O S U A R Y S F
 I R Q R E R L J T Q P A V A
 E Y Z G K S O T A H T U L
 A F T E R N O N T E A L
 T K Y X O W I C M S P R E
 C O N C I E R G E S X I N

Spot the 12 Differences



Help Peter the Porter navigate the corridors to bring the luggage to the bedroom!



GREAT SOUTHERN
 KILLARNEY



1. The _____ was built in 1854.
2. Actor C _____ Chaplin stayed in the hotel in the 1960s.
3. A _____ T _____ is served in The Garden Room.
4. The I _____ Health & Beauty Rooms are open 7 days a week.
5. We have 177 Luxury B _____ s in the Great Southern Killarney where our guests can stay.
6. Guests check-in at R _____.
7. If you have a question, the C _____ is always happy to help!
8. We have a large selection of books in the L _____.
9. B _____ serves lunch and dinner seven days a week.
10. Our signature dining room, The G _____ R _____ is open from 6.30pm to 9.00pm.
11. Great Southern Killarney has 6 A _____ of gardens.
12. In the gardens you will find the P _____.

- ANSWERS
- | | | | |
|-------------------|----------------|--------------|-----------------|
| 1. Great Southern | 4. Innisfallen | 7. Concierge | 10. Garden Room |
| 2. Charlie | 5. Bedrooms | 8. Library | 11. Acres |
| 3. Afternoon Tea | 6. Reception | 9. Brownes | 12. Playground |

